

50" STANDARD FLOW MULCHER SPECIFICATIONS

GENERAL		
Model	RK5015	RK6015
Working Width	50"	60"
Overall Width	61"	71"
Weight	1,340 lbs	1,465 lbs
Flow Range	17-30 gpm	17-30 gpm
Max Pressure	4,000 psi	4,000 psi
Max Horsepower	75 hp	75 hp
Number of Tools	22	26
Rotor Diameter	15"	15"
Rotor Speed	2400 rpm	2400 rpm
Rotor Bearing Size (mm)	ST65	ST65
Motor(s)	1 x 45V	1 x 45V

MAKE IT HAPPEN

ON THE FARM

- ✦ Clearing crop perimeters allows for additional sunlight exposure and results in more productive crop growth
- ✦ Clear fence rows to keep machinery from being damaged during planting, maintenance or harvest
- ✦ Complete vegetation removal down to ground level to avoid potential livestock injuries

RESIDENTIAL LANDSCAPING

- ✦ General vegetation management
- ✦ Fire prevention - create "defensible space"

RENTALS

- ✦ Easy to transport mulching head without CDL
- ✦ Adaptable to any standard flow SSL/CTL

FEATURES

- ✦ Efficiently mulch up to 5" material with the split ring rotor with knife tools
- ✦ Compact body design ensure carrier is agile in the woods
- ✦ Hinged motor cover to easily service key components

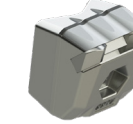
TOOL OPTIONS

Cubit Knife
standard



Double sided and easily flipped for a brand new cutting edge. This tool is faster at cutting, resulting in a finer finished product. A tapered tool body allows chip material to flow efficiently.

Cubit Carbide



Versatile tool for shredding material and improved durability. Ideal for applications that require ground engagement.

ADD ONS

CONSIDER FECONS® HYDRAULIC COOLER

Designed to be mounted on CTL and Skid Steer rooftops, our hydraulic cooler enhances the performance of the carrier by maintaining the hydraulic fluid at optimal temperature and viscosity.

FECON® 1/2" POLYCARBONATE DOOR WINDSHIELD

Form-fit 1/2" Polycarbonate Windshield required for mulching applications. Our replacement windows are formed to duplicate the OEM glass shape.

